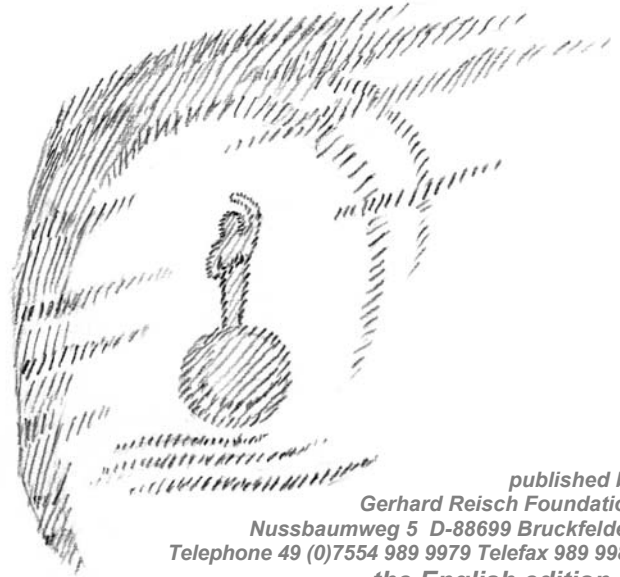




# Wayfarer

Newsletter for Friends  
of the whole Life Work  
of Gerhard Reisch



published by  
Gerhard Reisch Foundation  
Nussbaumweg 5 D-88699 Bruckfelden  
Telephone 49 (0)7554 989 9979 Telefax 989 9981  
the English edition 3.  
Winter 2002-2003

## *Dear friends and acquaintances*

*Thank you for your enthusiastic replies at the beginning of 2002. The response was far greater than we could have hoped for, both in confirmation of your interest in our communications and the subscription orders for Words for Living by Gerhard Reisch. There follows further news about what we experience in connection with his Life Work.*

## *2002 - Working with the Work*

*People are always contacting us about getting to know the Life Work of Gerhard Reisch more closely. First and foremost of course is the interest in his pictures. As in the past the pictures were accessible by arrangement, on a daily basis with accompanying guidance.*

Groups of different sizes (2 to 14 people) viewed pictures in Bruckfelden on 40 separate occasions during 2002 (either working intensively with just a few pictures or with extended series of pictures). The writings of Gerhard Reisch brought enrichment to this process.

Thanks to the Kaspar Hauser School in Überlingen it was possible to arrange 3 public viewings of some of pictures, as well as 9 introductory evenings with pictures and words, all of which were facilitated by various friends of the Work. Thus some 170 people were able to experience 78 different pictures by Gerhard Reisch.

Together with their respective facilitators the Foundation was held 7 of the 10 planned Seminars for 43 participants, accompanied by 47 pictures, chosen by seminar facilitators to deepen their particular themes.

At the beginning of the year, and again in the Autumn, **Ilse K. Müller** (Heidelberg D) accompanied the inauguration of regular work with images belonging to the series "A Path of Knowledge in Pictures", beginning in October. **Christine Schwandt** (Achberg D) led us in "Listening & Singing" in the presence of a few pictures. Accompanied by chosen pictures, **Erika von der Crone** (Gottlieben CH) led us into a deep experience of the ancient Chinese wisdom of Feng Shui and Qi Gong. With the help of poems by **Pierre Georges Pouthier** (Düsseldorf D), observation of pictures and conversation, we were able to "sense our angel". For the second time during five late Summer days **Christopher Bee** (Bodensee D) led creative work on a biographical path of knowledge, also in the landscape, and in late Autumn accompanied an Encounter with Evil in relation to its task in the World, and the Transformation of Adversary Forces. Together with **Elaine Beadle** (New Zealand) **Albrecht Hemming** (Staufen D) facilitated, also for the second time, insights into the theme of "Leadership" in the realm of professional work. During the year **Anton Kimpfler** (Freiburg D) contributed to the theme of death and our relationship with those who have died.

We were particularly happy about the visit from two dear friends, **Jakob Streit** from Spiez CH (born 1910) and **Charlotte Hauck** from Berlin D (born 1903). A faithful friend, **Rudolf Bodenlos** from Sülzhayn D (born 1924) took his way across the Threshold.

## *The Work is well established by Lake Constance*

We deliberately reduced the number of organised events compared with the previous year. It is, therefore, particularly satisfying that several groups developed their own ways of working with the pictures. In the Autumn two groups formed, which will devote themselves, using observation and schooling of the senses, to working fortnightly with the 35 original

pictures, collected in the well know "Path of Knowledge" These groups will carry on well into 2004. In 2003 it will be possible for new groups to form who wish to work in this way.

Since the pictures came to Lake Constance on 10. June 1999, we have endeavoured to publicise the presence of the Life Work of Gerhard Reisch in the immediate area and adjoining region. It is now clear that we have now been modestly successful.

The Work is, however, not a product for mass consumption. Indeed AnneGret Reisch indicates that Gerhard Reisch also cultivated this attitude. She confirms that this has been her experience in the 27 years since his death have been different.

Lake Constance is a World renowned region of european culture. The possibilites offered by the four encircling countries is simply magnificent. Of course we are very pleased that there are so many anthroposophically orientated institutions in the enviroment surrounding Salem eg. schools, churches, homes, practices, branches, clinics, studios, associations und farms, as well as many other initiatives. In three and half years we were able to make a contribution to the wealth of organised events in the vicinity.

Now it has become important that we do not make the mistake of believing that we have to competefor the attention of the public. One fundamental quality of Gerhard Reisch's Life Work is widely recognised, namely that it leaves one free as to whether, when and how one wishes to approach it. There are many friends of the Work who do not currently feel the need to see the pictures, although they regularly available for viewing or on a daily basis in a more informal setting.

The themes to which the Life Work of Gerhard Reisch can offer openings are for many surprising for many: see the overview of the Themes above. A chosen theme may often only be relevant at a particular moment in one's biography.

As we know, a list gives no sense of the experience. Also if we wish to have a genuine experience of the Work, it must be set up creatively. One can do this for oneself, or one can arrange to be guided in an appropriate way.

In addition to arranging viewings and readings, our chief aim in the last three years has been to facilitiate various possible professional applications of the Work by several of its friends.

## **Overview of the Content**

*Pictures and texts are archived under the following categories and themes:*

### **Nature and Elemental Beings**

*Landscapes and the realms of being of the Earth Sphere.*

### **Path of Knowledge**

*Threshold experiences, schooling and trials of human beings.*

### **Human Development and Community Building**

*Cosmic evolution and leadership in spirit worlds; angels, pupils, partners and guides; the Social Sphere and the Mysteries.*

### **Healing and Adversary**

*Temptation and transformation, pathology and creation of health in human beings and world events.*

### **High Festivals and Seasons**

*Human and cosmic rhythms their nature and working in the life of the Earth and Culture.*

### **Death and Incarnation**

*Dying and beyond the Threshold, the Heavenly Spheres and Midnight Hour, destiny-weaving and rebirth.*

## **Application of the Work**

*Since the Summer of 1998 over 200 separate opportunities for meeting the Life Work of Gerhard Reisch have come about. Not only did this consist of a whole spectrum of events (viewings, introductions, study-groups, courses, festivals, conferences, seminars, further trainings etc.), but also visits by individuals and groups, who wanted to get to know the Work for the first time, or to deepen their relationship with it, in connection with spiritual scientific work and research, their soul development or therapeutic and biographical transformation.*

It is the generosity and at the same time the humility of his whole Life Work, which move people deeply. A single one of his pictures can speak many languages. In order to understand the Work better in its entirety, one may for example imagine, that one picture can act as a whole library, dedicated to a particular theme of the Cosmos or the Human Being. Individual pictures work together like a choir with an orchestra. The conductor is the human being, himself, who seeks out this Work and does his research together with it. The free

individual brings the Work into musical harmony with his own being.

In Summer 1998 the 6th International Biography Conference took place in Albertus Magnus Haus in Freiburg. A presentation of the original "Path of Knowledge" pictures accompanied the work. At the

beginning and end of the conference each of the approx. 40 participants was able to carry a picture to and from the hall. Through the "ritual", the meaning of some of the pictures took on personal significance. Under the direction of Christopher Bee the 35 well-known images were organised into two inter-spiraling arms, like the Zodiac Sign for Cancer, thus making a walk-way from outside to inside, and from inside to outside. In the middle it was possible to experience how the inversion between the two bearers "Refugee" (Image 18) and "Christophoros" (Image 19), contribute to the building up of the human I. The intimate relationship between the path of biography and the path of knowledge, as indicated by Rudolf Steiner and Bernard Lievegoed, could be experienced and strengthened with the help of the pictures.

No wonder that Elaine Beadle encouraged the Foundation in 1995 to publish the portfolio "A Path of Knowledge in Pictures". Through her experience as a consultant for organisational development, she realised that schooled application of these images also as reproductions can make a significant contribution to individual human development in biographical work.

Since 1996 some 500 portfolios have found their way into the World. One can work just as well with reproductions of the images as with the original pictures, if one is willing to dedicate oneself with discipline. Indeed at the end of his life Gerhard Reisch received these words from the spirit realms:

***The picture worlds,  
which you created,  
are woven into the  
Ethers of the Earth  
and will shine there for the souls,  
who will come in the future.***

Since the death of Gerhard Reisch, friends of his Work have developed their interaction with it in the most varied ways. Lectures have been given about the pictures, or the pictures have been used to support lecture themes. Anton Kimpfner writes: "I can work with a certain theme, view a picture related to it and just have to say: everything is in there, and far more!". With

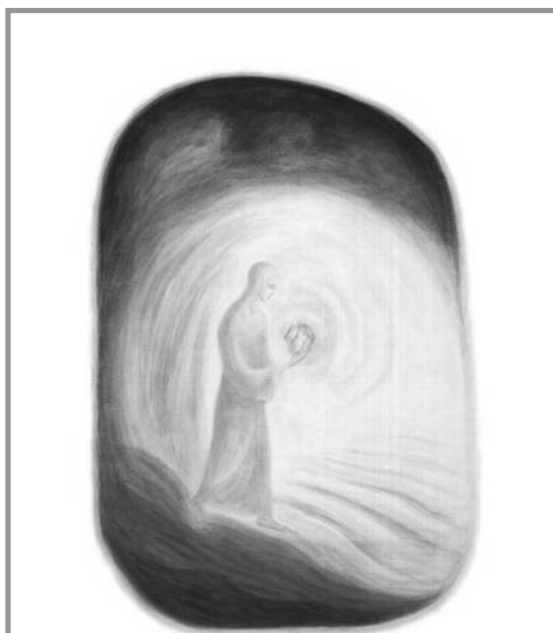
the help of a single picture or a series of pictures it has often been possible to deepen conversations creatively about any matter or concern. Many people experience that the pictures become active through personal effort, even when they are not being directly observed.

Waldorf teacher Pierre Pouthier describes how interesting it was to imitate the gestures and movements of the pictures in space and time. In presence of the pictures people have for example explored play, singing and dance, created music, sculpture and paintings. Occasionally images have also been copied or further metamorphosed.

That it is possible to work with the content of the pictures through the most diverse application of schooled artistic creative activity, is testified to by Irmgard Beckert (Waldkirch D), who facilitates seminars about play (after Schiller and Kufuss): "In their variety and depth they touch existential "living - sensing - moments". Inner realms, experiences, questions are continually confirmed, enlivened, clarified and transformed through the meeting with. I have learned to appreciate and love them as silent companions in the work space."

Single pictures, or groups of pictures have often been worked with intensively using for

example three-fold, five-fold or seven-fold stages of observation. Images in the "Path Of Knowledge" portfolio have been juxtaposed in rows, to help reveal new relationships and meaning. Occasionally deeper questions are put and images taken blind from the set, sometimes with astonishing results for the individual or the group.



*"At the Threshold" Image 6 out of "A Path of Knowledge in Pictures"*

*The soul has to overcome strong resistances in the crossing from sense-bound existence to a state of freedom from sensuality.*

*These resistances occur because the soul has to separate from its former style of inner life, from thinking, feeling and willing as these appear in the sense-world.*

*The soul must become conscious of the forces which stand behind thinking, feeling and willing in life on earth.*

*It must learn to channel these forces into another direction, in the direction of the spiritual world.*

*It will only succeed when its interest in the spiritual world is at least as great as that for the earthly world.*

*The strongest force of courage is required to achieve this.*

*A true death will be experienced.*

*The three beasts appear on the threshold: earthbound thinking, earthdirected willing, personal egoistical feeling.*

Although in former times he travelled around Europe with his own pictures, Gerhard Reisch published his words and pictures for the use of his circle of friends and sponsors. The "Book of the Dead" is already on its way in the World in its fourth edition. Many people have been grateful that such a work exists, when they were accompanying the dying, were themselves facing this threshold, or, as family or friend, were accompanying the deceased through "reading". In the fields of pastoral care, or care of the elderly and the sick his images and words can help.

### ***The healing possibilities***

... are manifold. In the practice of spiritual psychology, psychotherapy, artistic and creative form therapy and biographical counselling, as in the professional accompaniment of development and training in organisations, institutions and communities, the daily indications in connection with the application of the Work are supportive. Whether a familiar image comes into consciousness as a silent companion, or serves the moment in a schooled approach as a reproduction or original, the human being finds his or her own way in freedom through heaven and hell.

The Work has served as an inspiring support for a training called "Leadership in Central Europe" for those in responsible positions, which has been offered for the last 8 years by the consultancy association MIRA Companions started by Albrecht Hemming and Elaine Beadle.

The Work consistently serves the schooled encounter with adversary powers and counter forces with particular rectitude. For every path images and words can be found. In moments of deepest suffering or intensive enthusiasm further ways and possibilities may be revealed, which yet leave one entirely free.

One intuitively knows that one is involved with supersensible beings, with elemental beings or human

beings. The Work offers "windows into the activity of being, which is working behind and in Earth existence". Thus speaks the eurythmist Eva Mirjam Müller-Voigt from Loheland in Germany: "The revelation [of an image] is veiled: despite the more or less sketch like quality of the [technical] execution [of the images], or perhaps because of this, it [the revelation] can be experienced as true. Each image to which I open myself, is - and becomes - a personal inner reality. I am myself the objectivity-subjectivity which is at the same time human. It wishes to come into expression in conversation: in myself alone or together with others through words. A palpably effective process of discovering the I is active here."

Portals into "knowledge of higher worlds" open up. During the Meeting at the Threshold one's own music creates itself in the soul, when, in the sense of Christ's words we play, "like children", with the instruments which have been given to us. The hierarchies, human spirits and elemental beings are filled with joy at every opportunity of singing in a choir with human beings on the Earth.

At the beginning of some work with picture 23 in the "Path of Knowledge" series of images Ilse K. Müller spoke of Rudolf Steiner's insight, that it is not the work of art but rather what happens in the observer which is significant. The style and the esotericism of the images are not relevant for every person. Also those without an actual interest in the Work, become attentive as the experience themselves seen as though looked at by an "ikon". Gradually one begins creating a "sculpted", "painted" or "musical", work of art within oneself.

### ***Prospects for 2003***

We have made no plans as yet for organised events in 2003. In the context of the given situation and within the limits of the available resources, we have further promoted the Work in the region, also internationally.

## ***Applications of the Work***

*The images and words offer many possibilities and openings, eg.:*

### ***Viewing and Reading ...***

*at festivals, gatherings and events.*

### ***Inspiration and Research ...***

*in conversation, creative activity, play and schooling in groups.*

### ***Support and Development ...***

*of pedagogical, therapeutic, artistic and social processes.*

### ***Clarification and Transformation ...***

*of the life and unfolding of individual biography, karmic undertaking and destiny aims.*

### ***Serving and Enrichment ...***

*of lectures, seminars, training, supervision and coaching.*

### ***Enhanced Learning and Evolution ...***

*in organisations, associations families and communities.*

### ***Promotion and Celebration ...***

*of traditions, initiatives, rituals transitions and sacraments.*

We believe we have consolidated contact with the circles of friends, whilst also gaining new interest for the Work. For 27 years now people have been finding their way to each other again and again, in order to work in a dedicated way with this Work, thereby furthering their spiritual, soul and community development. Often in our over-fed society one is only able to act when one is left free to seek or wish for the right moment out of oneself.

briefly - we have the following plans for 2003:

### **Working groups**

#### *A Path of Knowledge in Pictures*

*An inner pilgrimage through the 35 original pictures in the well known portfolio of images facilitated via intensive schooling of perception and all the senses: in our hearts an Imagination comes into being.*

*Twice a monthly  
Tues. 9-12am or Sun. 18-21pm.  
Registration recommended.*

Two groups have already started. It is still possible for interested persons to join in with this work during 2003.

Other working groups have also pursued their special themes of study and research together with the pictures during 2002. This possibility will be continued during 2003.

### **Institutions in the region**

*... are offered the possibility to hold viewings of pictures by arrangement and under guidance, in connection with themes of study, research and special events.*

*If you are interested please get into contact with the Foundation well in advance!*

In our area there are for example many small and large working communities with an anthroposophical orientation, in which many of those involved very rarely get an opportunity to attend events outside of their own circles of responsibility. Amongst these, however, there are many friends who

have known the life Work of Gerhard Reisch for a long time. Appropriate people in these communities will be informed comprehensively about the many possibilities of working with his images and words. Conversations about such initiatives have already begun. Public events and working groups, which develop in this way, will be announced in the usual way (see page 6).

### **What else is possible?**

*The Foundation is open at all times for questions, new ideas and initiatives, which the life Work can serve.*

*By arrangement the original pictures may as always be viewed daily under guidance.*

It was always a concern of Gerhard and AnneGret Reisch to nurture and honour the continuity of relations with the most different circles, who have been interested in his Work. In this sense all visits from individuals and groups up to approx. 12 Persons are welcome.

Naturally it would be nice to be able to offer generously sized rooms for all purposes. However, we are thankful that we can indeed serve many needs. When the time is ripe, we hope that changes also in this respect will be made possible..

As always the pictures are available for therapeutic and biographical work. If there is a need to be with a particular picture in silence, or one is seeking schooled guidance, alone or as a group, something can be arranged.

The Bard and Sound Healer Jehanne Mehta from Stroud GB says: "With the pictures around us I feel a supporting warm presence of being held. My whole meeting with the images has been a warming and heart

strengthening experience."

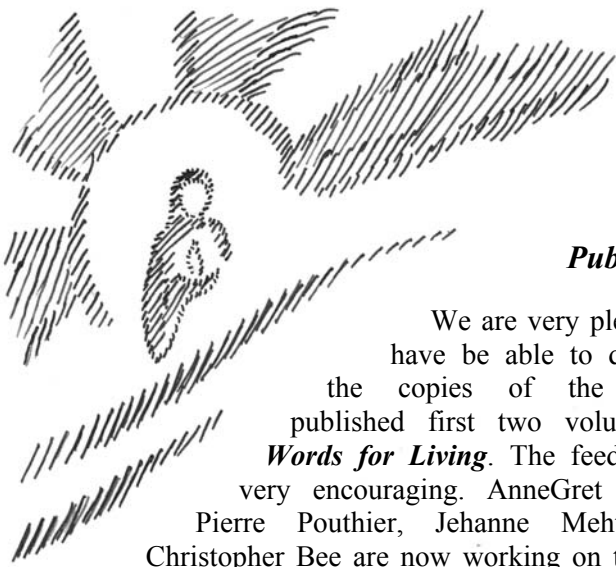
We stand before changing times. For every one of us it is important to be able to develop a quiet warm heart, open to the concerns of humanity.



*"The Soul seeks the Holy Isis" Image 34 out of "A Path of Knowledge in Pictures"*

*Only one who dares greatly,  
can gain greatly.  
Only one who courageously  
bears the great shocks  
which the ascent to the  
frontier mountains of the world  
brings to the soul,  
is worthy to behold  
the realm of the gods.*

*Only one who strides on  
fearlessly,  
when the soul quakes  
down to its deepest roots,  
when the earthly human being  
is brought to nothingness,  
only to that one  
is the power rightly given,  
to behold the light of the spirit.*



## **Publishing**

We are very pleased to have been able to despatch the copies of the newly published first two volumes of **Words for Living**. The feedback is very encouraging. AnneGret Reisch, Pierre Pouthier, Jehanne Mehta und Christopher Bee are now working on the next three volumes. We want to thank everyone who paid their subscription in advance for their patience and trust. Also we want to express our thanks to the book binding studio in Lautenbach and especially to Océ South West Germany Document Systems, who have sponsored the the printing. A subscription has become a little more expensive, but it's still worth signing up for one.

## **Words for Living volumes 1 - 5**

120 x 150 mm (pocket size) each € 15.00

Subscription for all five fünf volumes € 55.00

verses and guiding words - english translation black and white graphics - traditionally bound

- 1. Meditative Verses and Prayers (2002)**  
verses and guiding words
- 2. Starworld - Earthstar (2002)**  
cosmos, human being, nature and festivals
- 3. A Traveller (2003)**  
the path across frontiers and across thresholds
- 4. Living and Dying (2003)**  
death and rebirth
- 5. Healing and Transformation (2004)**  
of pain and blows of destiny

**Treat yourself to gift  
or give someone a present!**

The "Path of Knowledge" portfolio continues to successfully make its way into the World in 2002. Orders for all the other publications have also been consistent. There is a good chance that it will envisage additional volumes of **Words for Living**. Furthermore, we are gradually exploring new ways of making colour reproductions of the original pictures which we can all afford.

## **Imprint**

**Wayfarer**

*an organ of communication for the*

**Gerhard Reisch Stiftung:** Gemeinnützige Stiftung - Charitable Trust **Vorstand - Trustees:** AnneGret Reisch • Christopher Bee • Elaine Beadle  
**Sitz - Registered Office:** Nussbaumweg 5 • D-88699 Frickingen-Bruckfelden • Linzgau • Baden-Württemberg • Bundesrepublik Deutschland  
**Spenden - Gifts:** GLS Gemeinschaftsbank eG • Postfach 101923 • D-70016 Stuttgart • Konto-Nr. 27 190 000 • BLZ 430 609 67

## **The Foundation**

The new frames will be ready at the beginning of the New Year. They will enable access to a further 40 pictures in all the theme categories, which until now could rarely be viewed. Already the four new storage cases of generous dimensions are ready and waiting.

In 2003 we shall, as in previous years, employ various methods of communication (eg. Wayfarer, Das Goetheanum, Info Drei, Novalis Magazine, New View, Die Welle, local groups, schools, invitations and posters), so as to be able to promote matters which are related to the life Work of Gerhard Reisch. As in the past we would be very grateful for your support:

**Please could you help further  
by sending us a contribution  
in the form of a gift for  
the communications.**

*Wir senden Ihnen Kommunikationen von der Stiftung, auch wenn Sie nicht zu den Kosten der Mitteilungen beitragen können oder wollen!*

*The guideline which may be considered  
for 2003 starts at € 15.*

*A bank transfer to*

**Account 27 190 000  
Gerhard Reisch Stiftung  
GLS Bank Stuttgart  
Bank Code 430 609 67**

*will be gratefully acknowledged with  
a formal confirmation for tax purposes,  
if this wish is expressed in writing  
in the transfer request.*

*The life Work of Gerhard Reisch  
is maintained and mediated through a  
charitable foundation which serves  
cultural and educational purposes.*

*Gifts up to 10% of the taxable income  
may be deductible, according  
to local tax laws.*

**In the name of the  
whole Life Work of  
Gerhard Reisch  
we thank you  
for Your support!**

**With warmest greetings,**

**AnneGret Reisch   Christopher Bee   Elaine Beadle**